



Bee Keeping

A novice's view

The difference between a bumble bee and a honey bee



What do you need to be a beekeeper?

- Equipment
 - A beehive
 - A bee suit
 - A smoker & a water spray
 - A hive tool
 - A feeder
- Personality
 - Courage
 - Calmness
 - Ability to perform under pressure



Who lives in a beehive?

- A queen bee (female)
- Up to 60,000 worker bees (female)
- About 500 drones (male)

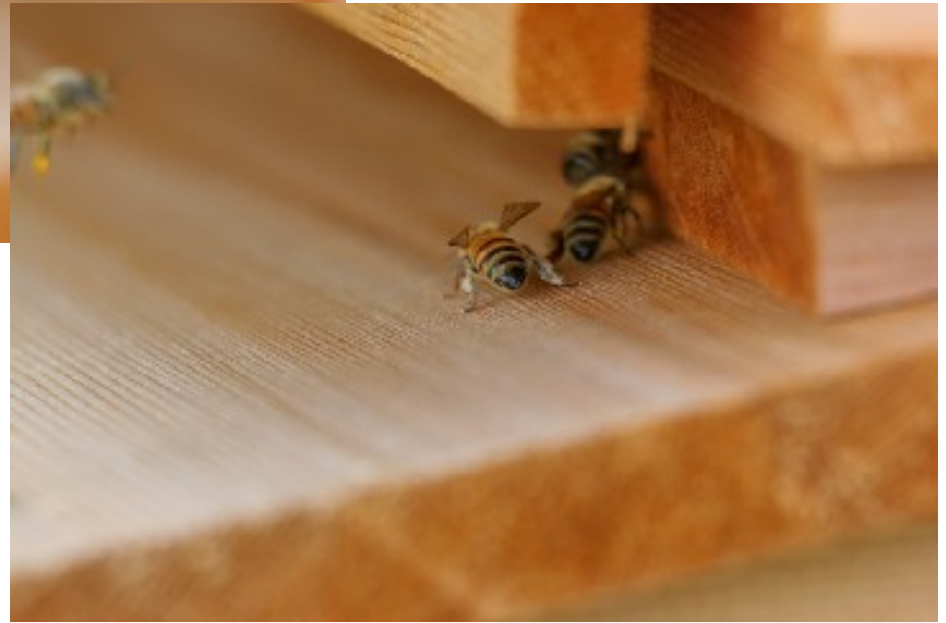
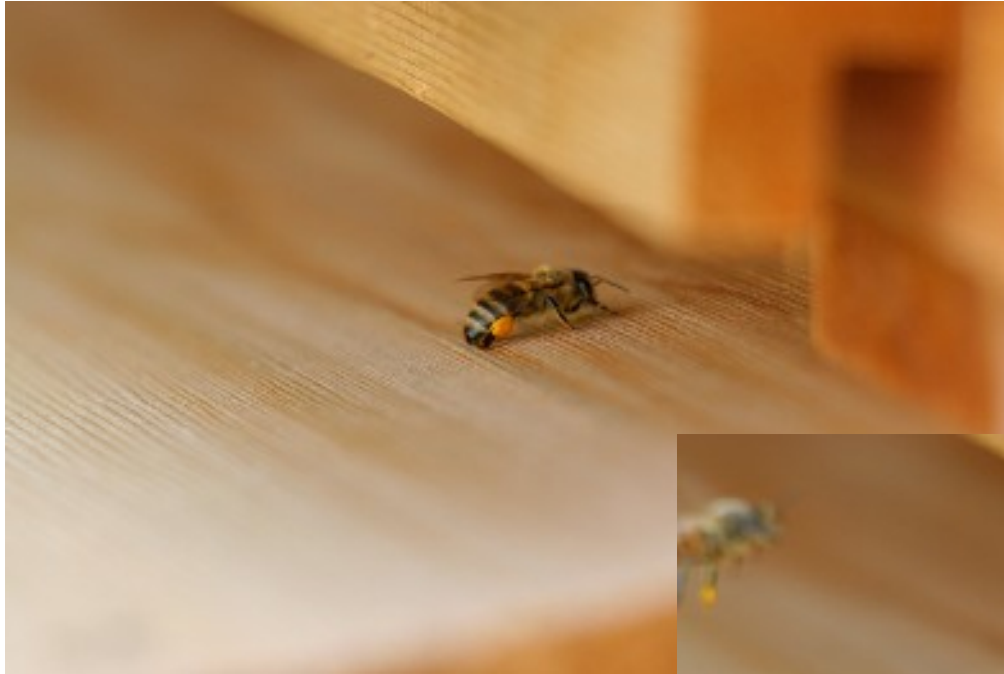


How long do bees live?

- Queen bees live for 3-4 years
- Worker bees and drones live for approximately 6 weeks

What do bees do?

- The queen bee is pampered! She has servants that feed her and groom her, all she has to do is lay eggs. After fertilisation, she NEVER leaves the hive again until she dies.
- Workers are born as larvae and are fed by juvenile workers until they pupate.
 - Once they become adult bees, they start off doing jobs that are confined to the hive.
 - Then they take a turn at being guards for the hive.
 - Finally, in the last 2-3 weeks of their life, they are allowed to go out of the hive to collect pollen, propolis and water for the colony
- Drones hang around all day in a drone congregation place, waiting for a queen to come along for fertilisation



What role do honeybees play in our lives?

- One mouthful of food in every three is as a result of pollination by bees
- Albert Einstein once calculated that if we had no bees, the human population would die out in four years.
- In China, there are enormous parts of the country where there are no bees because they've been killed by chemicals or erosion of their food supplies. This means that the entire human population of these regions spend their days up ladders trying to pollinate the trees by hand.
- Bees provide us with honey and wax, but also with most of our other food

What jobs does a beekeeper need to do?

- Spring/Summer
 - Inspect the hive and colony once a week, making sure the queen is alive and laying eggs and the workers are making comb and honey
 - Provide extra space if the colony is getting cramped
 - Prevent swarms
 - Check for disease/illness
- Autumn/winter
 - Check colony is in good condition for winter
 - Feed as necessary
 - Ensure colony is warm enough





How do we use honey?

- Honey can be used in most of the same ways as sugar.
 - As a sweetener for your drinks
 - In cooking
 - As a medicine
- BUT
- It can also be used in hospitals in wound care
 - It is used as an ingredient in many medicines

How do we use honeycomb?

- Honeycomb is made from bees wax
 - Wax can be used to polish furniture
 - To make candles
 - To make toiletries and cosmetics

.....or you can simply eat it with your honey.....YUM!

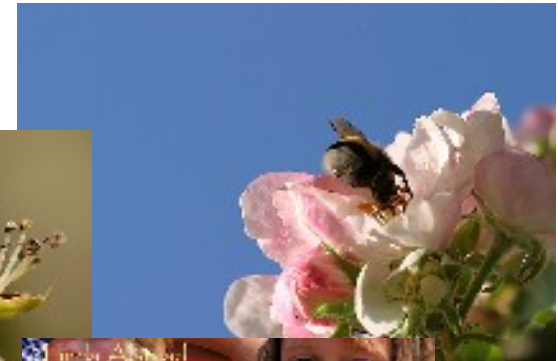


What happens if there are no bees?

- No pollination



- No food



- No people



Which of these could we have without bees?



Coca Cola



Chocolate



Cherries



Books



Rope



Salt



Bread

Only these.....



Salt



Bread



Any Questions?

Linda Alstead